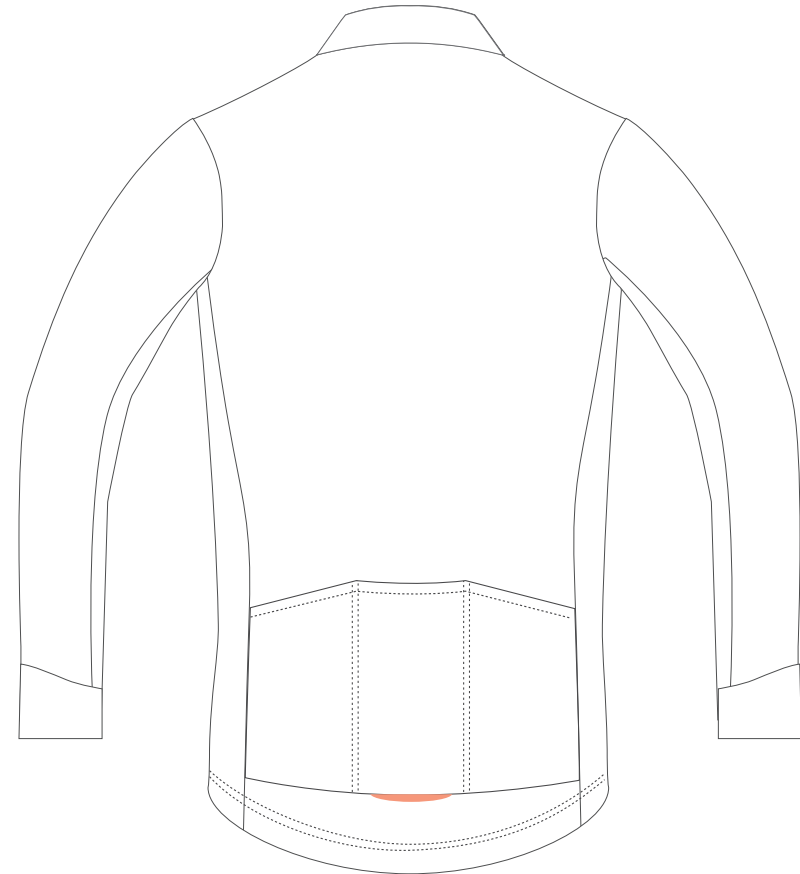


Template



Main fabric and Auxiliary



☐ milk silk fabric+White grid polar fleece :
Front panel+Sleeve+Collar

☒ Polyester brushed : Back panel+Back pocket
+Back bottom

☒ Miti Stelivo : Side Panel+Front bottom+
Sleeve bottom+Cuff+Inner collar

☒ Double-faced milk silk compound
windbreaker fabric : zipper cover tape

☒ Reflective Piping

☐ No flat-lock sewing

3-needle 5-thread ☒

4-needle 6-thread ☐



☐ A : MONTON LOGO



☐ A : Normal Ink



☐ B : Neon Ink

面料示意图

Back panel+Back pocket+Back bottom : Polyester brushed



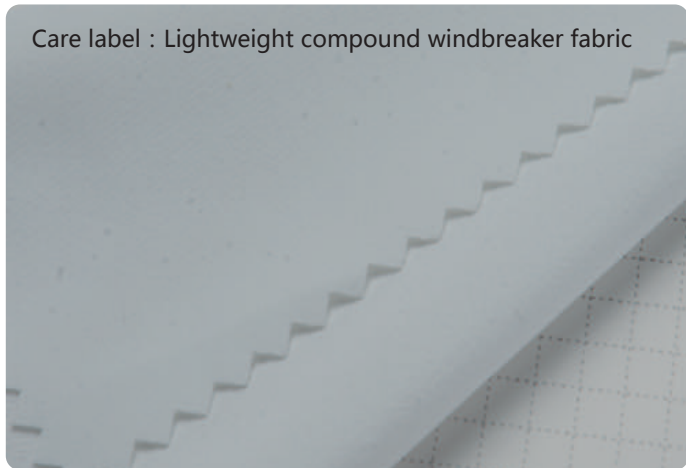
Side Panel+Front bottom+Sleeve bottom+Cuff
+Inner collar : Miti Stelvio



Front panel+Sleeve+Collar : milk silk fabric
+White grid polar fleece



Care label : Lightweight compound windbreaker fabric



zipper cover tape :
Double-faced milk silk compound windbreaker fabric



Auxiliary

MONTON epoxy brushed elastic band



#3 brand black rubber head full length zipper



Reflective Piping



Product Show



Front



Back

Details

Reflective Piping



Zipper



Brand logo



zipper cover tape



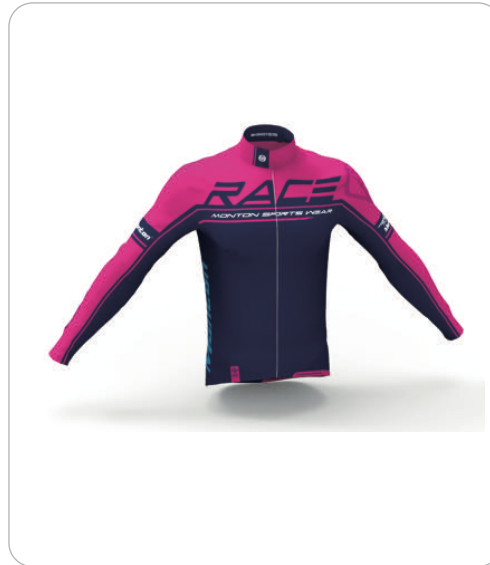
sewing



Back Pockets



3D Display



<http://montonsport.com/mt3d/main.html?ag0919ys9804mrace201701>