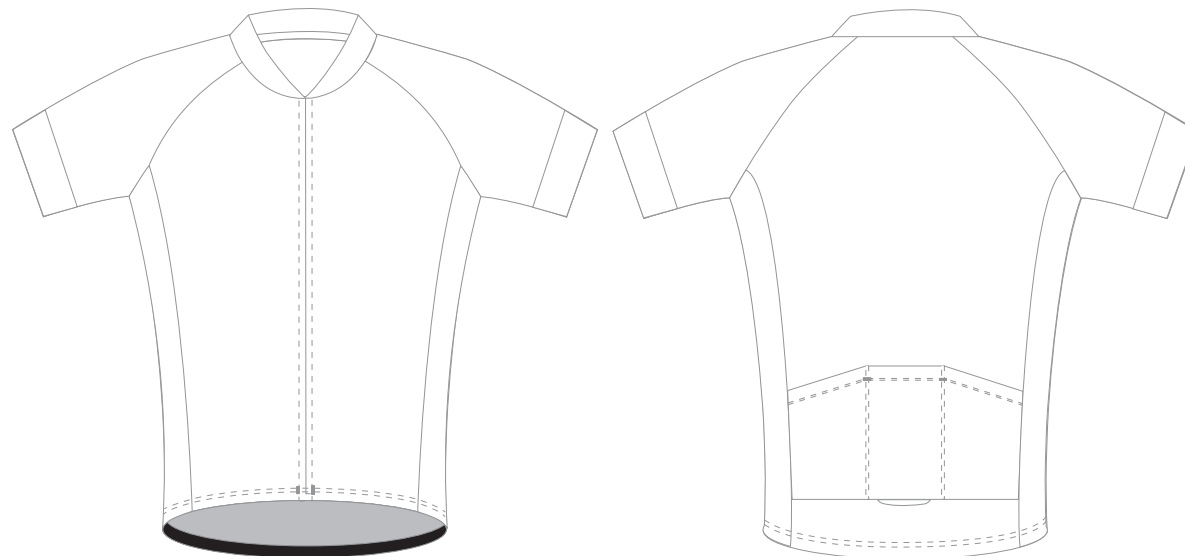
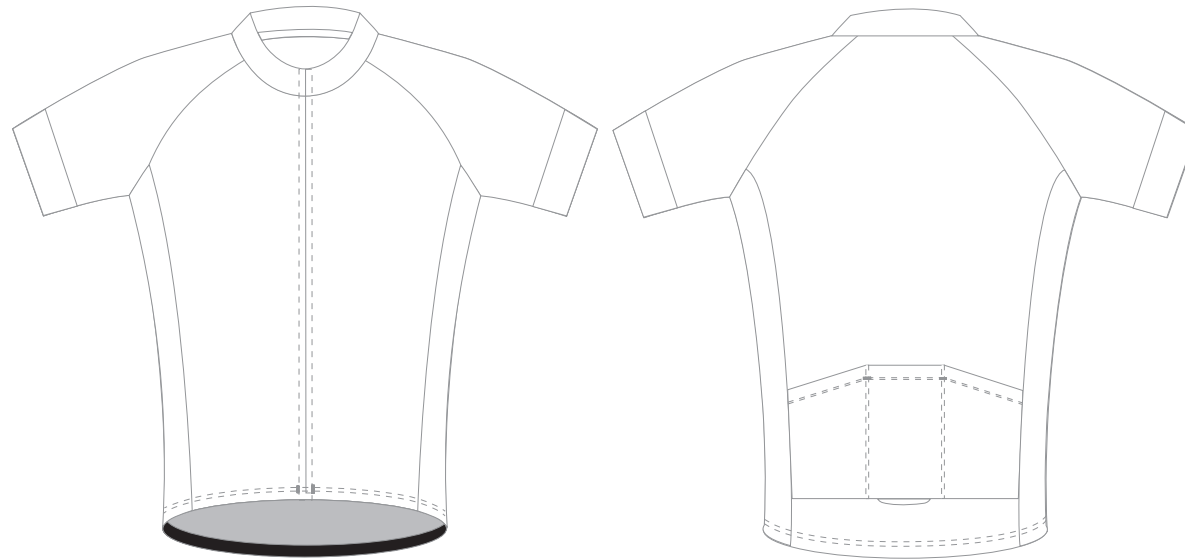


Template



Fabric & Auxiliary



- Main Panel: IT Fabric
- Side Panel: Poly-mesh jacquard fabric
- Sleeve cuff:
A153 Taiwan Jonestin Folding (4.5CM)
- Reflective Piping
- Edge binding cover
- 2.5CM Black PP Lamination Elastic String

Workmanship: Overlock

No line

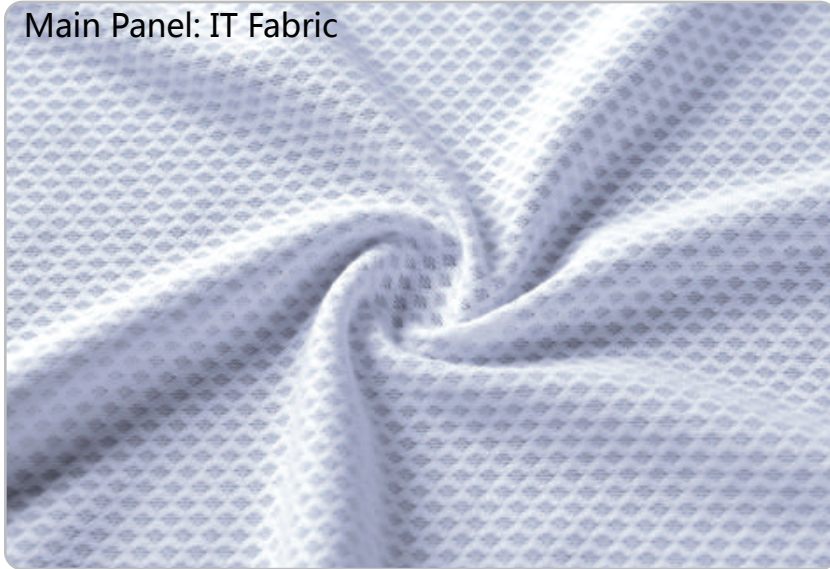
Three-needle Five-thread

Four-needle Six-thread

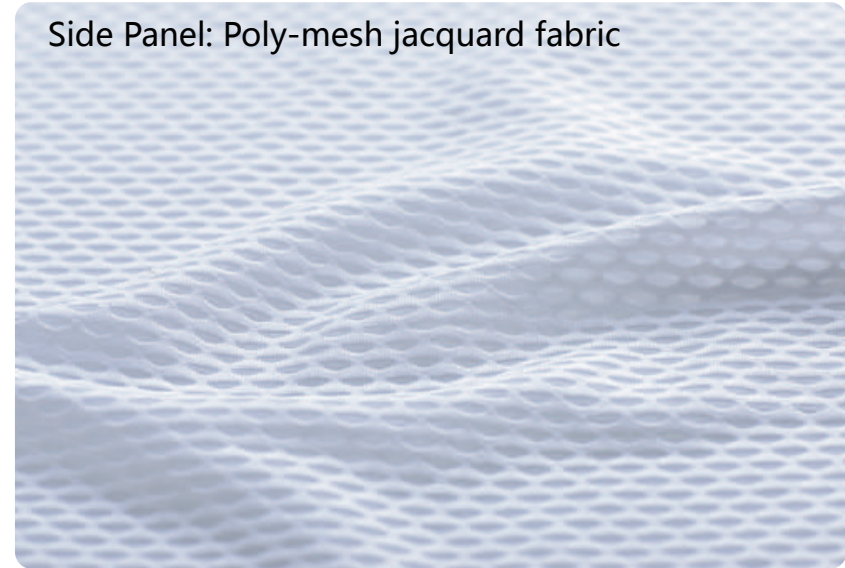
- A : Brand LOGO
- A : Regular Ink
- B : Neon Ink

Fabric

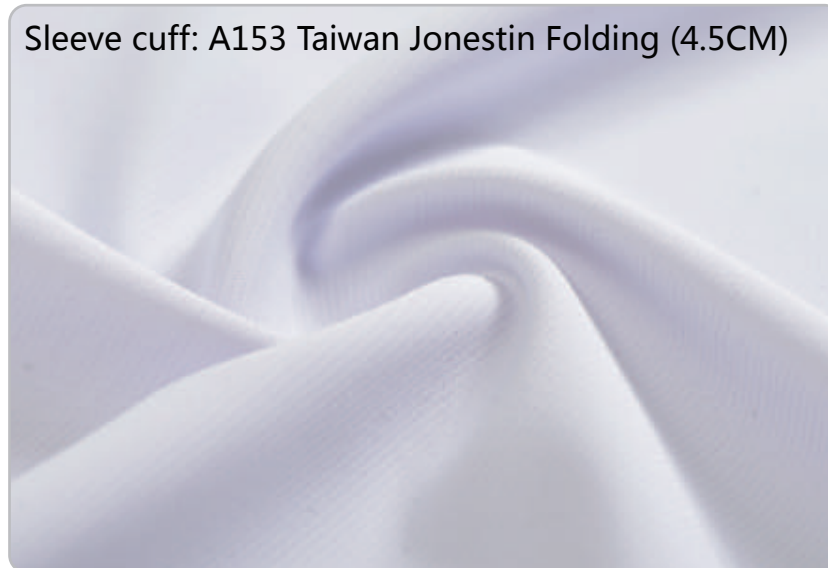
Main Panel: IT Fabric



Side Panel: Poly-mesh jacquard fabric



Sleeve cuff: A153 Taiwan Jonestin Folding (4.5CM)



Auxiliary

2.5CM Black PP Lamination Elastic String



Reflective Piping



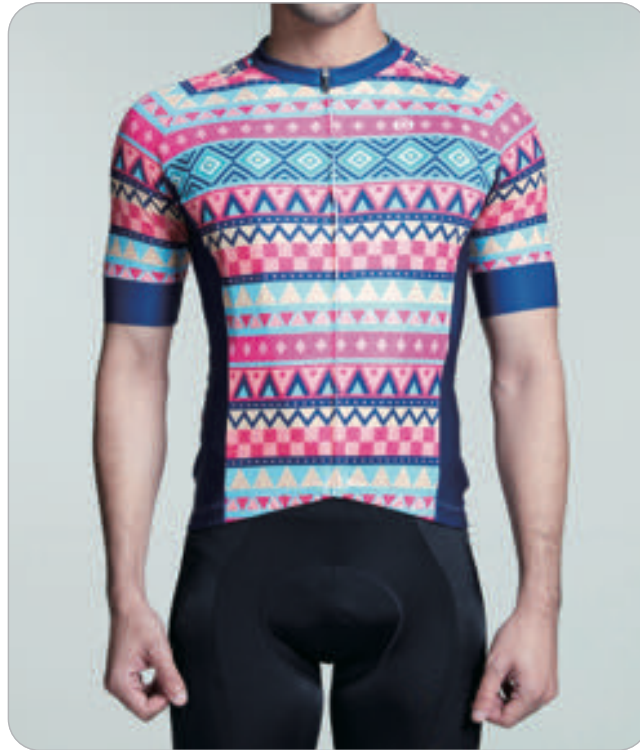
1cm Edge binding cover



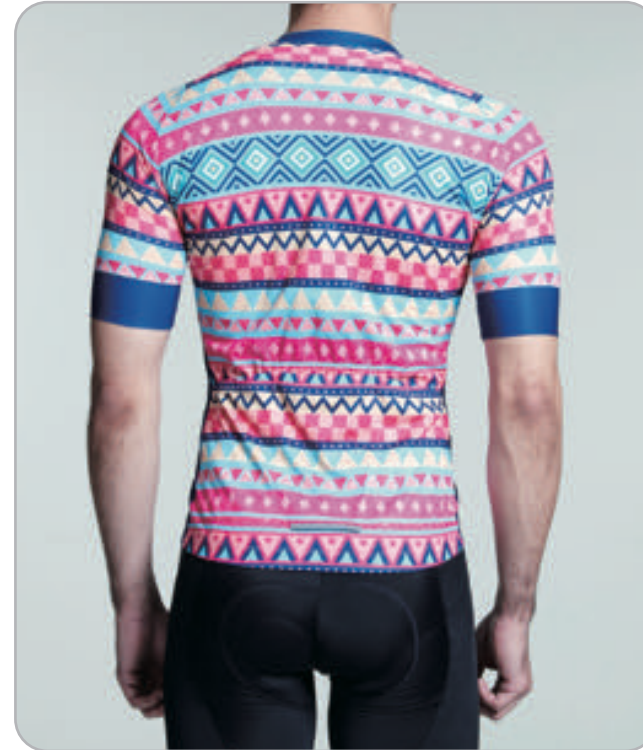
Workmanship: Overlock



Product Show



front



back

Details Show

Collar



Cuff



Underarm



Reflective Piping



Back Pockets



Hem Gripper



3D show



<http://montonsport.com/mt3d/main.html?ag0402ys9042mahuashu01>

